

PROJECT: Kigali Heights Development

TYPOLOGY: Commercial Development - Mixed use

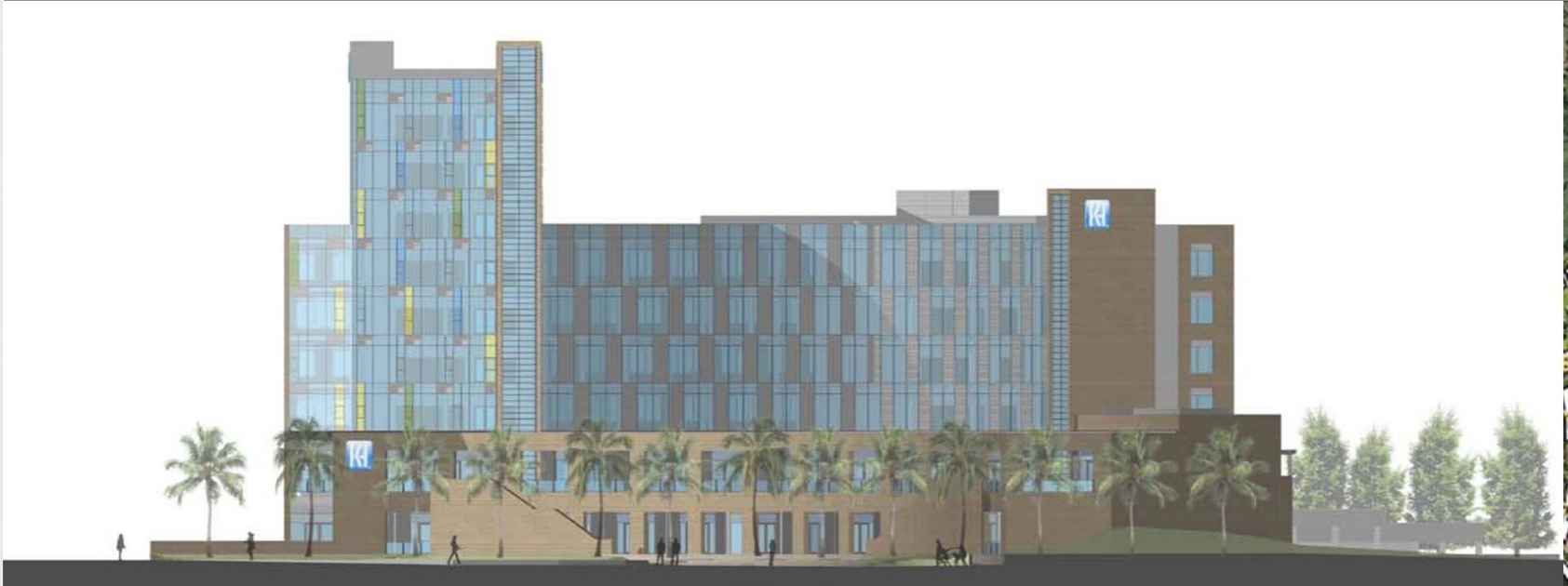
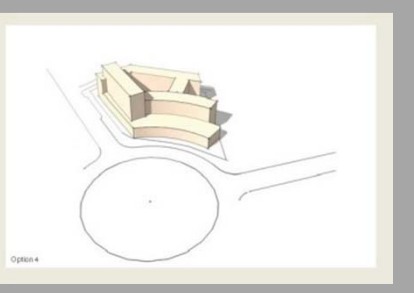
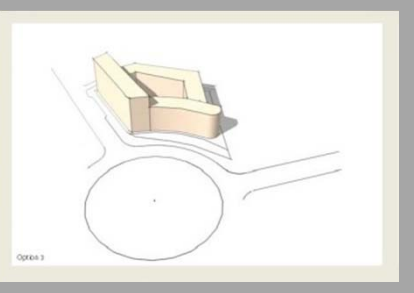
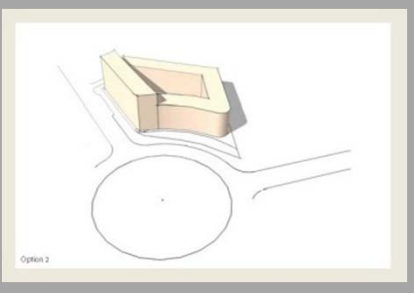
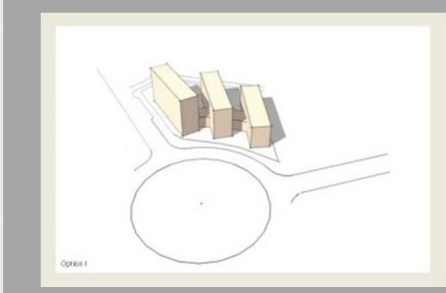
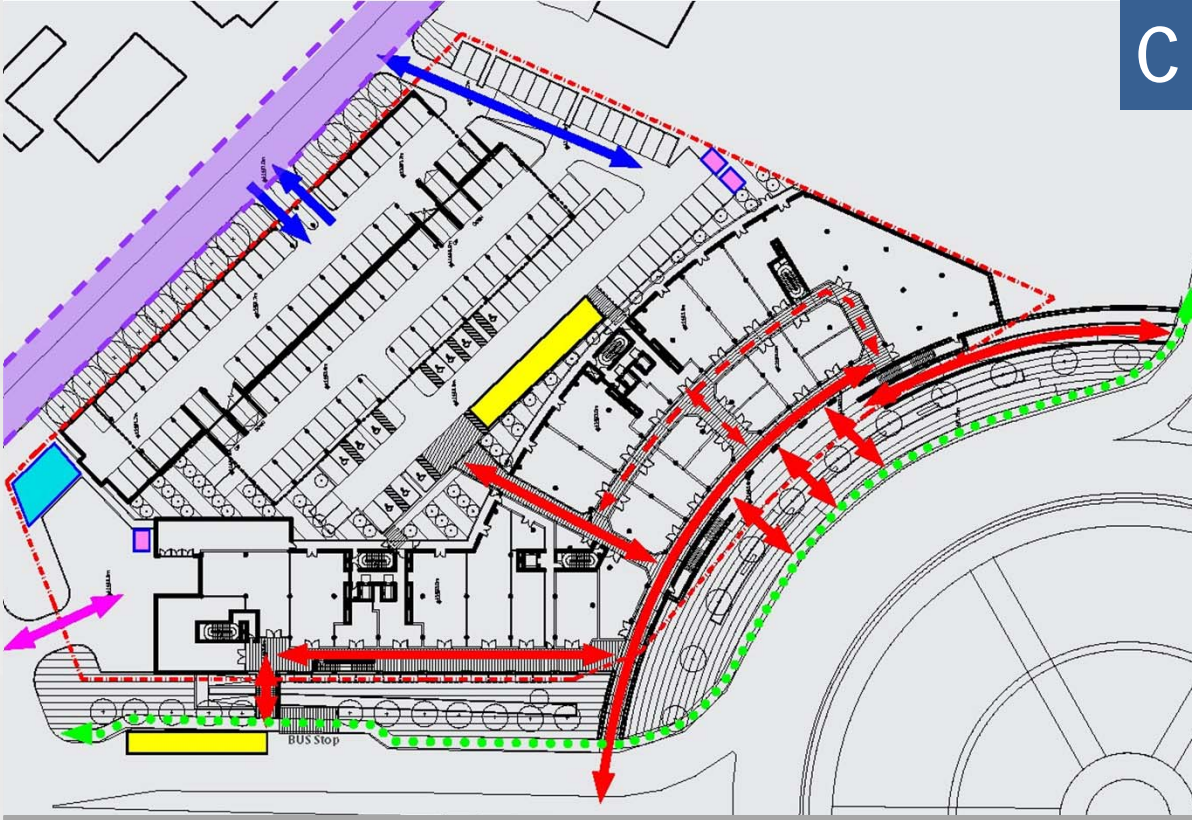
LOCATION: Gasabo district, Kimihurura Roundabout, Ex Post Office

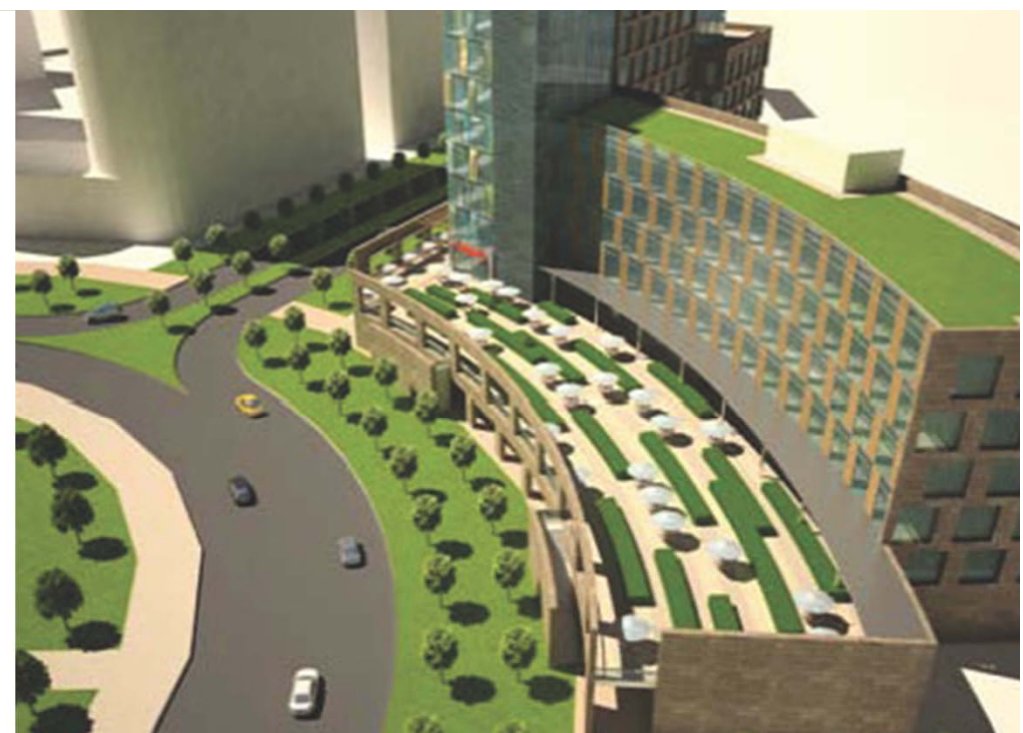
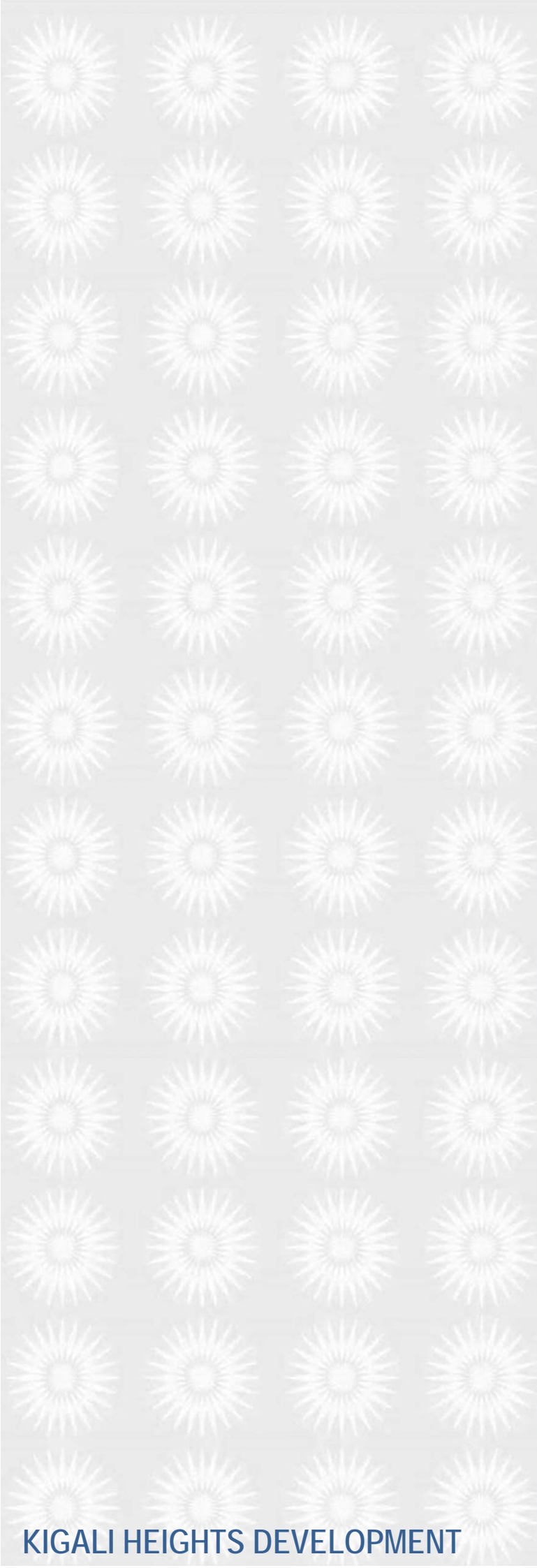
DEVELOPER: Kigali Heights Devt Company

ARCHITECT: Vavaki architects

The "Kigali Heights Development" project has been selected as best practice for the following features:

- Site analysis and careful considerations to the Kigali city Master Plan and Kimihurura Subarea principles (A)
- Design concept (B)
- Urban integration and corner solution
- Clear explanation and good graphical representation
- Access strategy (C)





PROJECT: Prime Excellence Kigali
 TYPOLOGY: Commercial – Mixed use
 LOCATION: Nyarugenge district,
 Kiyovu sector
 DEVELOPER: Prime Excellence Group
 ARCHITECT: FBW

The "Prime Excellence Kigali" project has been selected as best practice for the following features:

- Urban integration (A)
- Corner solution (A - B)
- Relation with the public realm (A)
- Design solution careful to the aesthetic and functionality (natural ventilation) (C)



PROJECT: Early childhood development Centre

TPOLOGY: Public Facilities – Primary school

LOCATION: Kicukiro district, Gahanga sector, Kagasa cell

DEVELOPER: The Children’s Ark Project

ARCHITECT: IF-UNTITLED architects in partnership with Nerea Amoros Elorduy architect

The "Early childhood development Centre" project has been selected as best practice for the following features:

- Design that respects, benefits and takes inspiration from the existing topography (A)
- Child friendly design approach (B)
- Sustainable construction principles (C)
- Project as Community driven initiative
- Public interest
- Clear explanation and good graphical representation

